



Saint Paul
PUBLIC SCHOOLS

Envision SPPS: Our plan for well-rounded programs

Board of Education - Committee of the Board

Jackie Turner, Chief Operations Officer

November 9, 2021

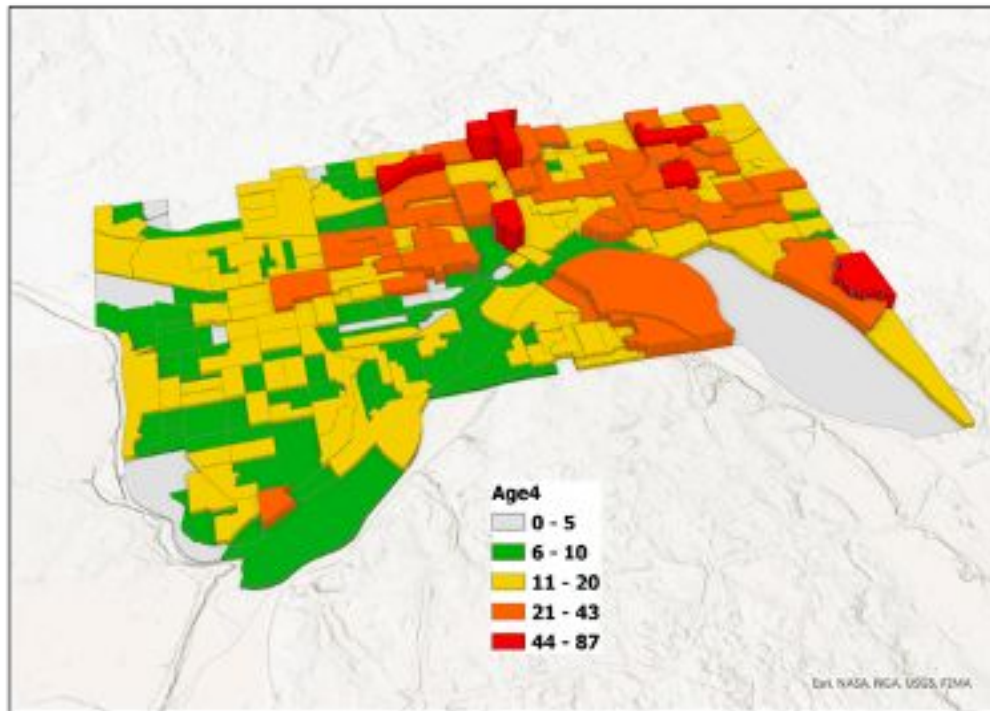
Envision SPPS: Opportunities to Meet Emerging Needs

- Envision SPPS provides opportunity to welcome growth in:
 - Early Childhood Education
 - Special Education
 - Innovative Programming
- Opportunity to be strategic and planful

Early Childhood Education

Early Childhood Work Group findings

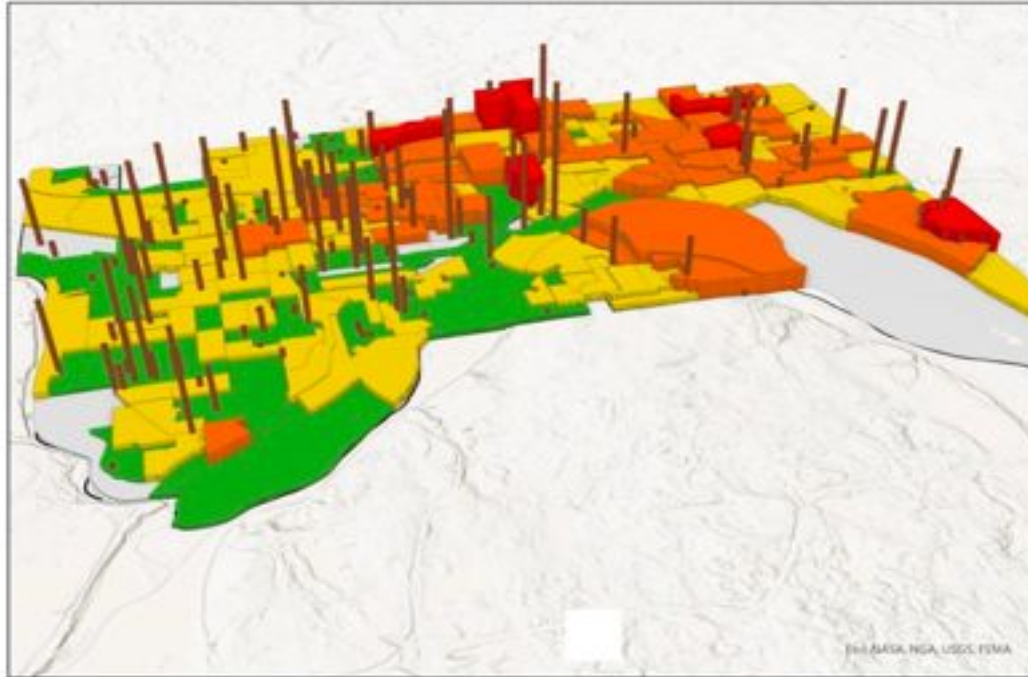
Where Do Four Year Old Children Live in St Paul By Census Block Group?



Source: ESRI Demographics

Early Childhood Work Group findings

Where Are Large and Small Childcare Centers Concentrated (Spring 2021)



Source: Minnesota Department of Human Services; ESRI Demographics

Special Education

Special Education Enrollment Trends

- Overall, consistent enrollment in special education for the past 3-5 years
- Increase in students identified Autism Spectrum Disorder (ASD)
- Increase in students identified in Early Childhood Special Education (ECSE)
- Decrease in students with Emotional Behavioral Disorder (EBD)
- Higher number of students needing specialized programs who reside in Areas A, C, E

Envision SPPS - Special Education Recommendations

Workgroup Purpose Statement: Determine how Special Education programs and their locations can be better aligned to improve the experiences and needs of students and their families.

Recommendations:

- Complete accessibility analysis of buildings to eliminate barriers in future construction and programming
- Develop aligned pathway from Early Childhood Special Education to grade 12 for specialized Federal Setting 3 programs that include:
 - Dedicated and appropriate sized classrooms within area schools
 - Equitable access to educational and career/college pathways
 - Specialized programs that need specific equipment have it in the space

Innovative Programming

Envision SPPS: Opportunities to Meet Emerging Needs

- Envision SPPS provides opportunity to welcome growth in innovative programming:
 - Culturally-specific programs
 - College and Career programs
 - Full-Service Schools
 - Community Partnerships

Bruce Vento

Flagship opportunity to define and meet the needs of the East Side with:

- State-of-the-art PK-5 school
- Early Childhood Education hub
- Community services hub
- Achievement and Integration, World's Best Workforce
 - Culturally representative staff

SPPS Builds

SPPS Builds: Potential Actions by Area

Immediat items (BOE - Dec. 14):

Area	School	BOE Action
C	Vento	New construction - Gate Check 1 supplement, to start programming and pre-design
E	Wellstone	HVAC Project - Gate Check 2, modified schedule to take advantage of closed building
F	Obama	Renovation Project - Gate Check 1 supplement, to start programming and pre-design

SPPS Builds: Potential Actions by Area

Mid-term items (March - April):

- **Complete program overview**
 - Reviewing the timeline of all work currently identified at closed sites
 - Impacts to timing (if any) on all other currently planned projects
- Anticipate longer term envisioning processes
- Current or future early childhood hub needs
 - Include JJ Hill Gate Check 1 for future use
- Cherokee Heights strategic hold

SPPS Builds: Potential Actions by Area

Longer-term - Spring-Summer 2022: Engagement and program envisioning

Area	School	Planning input and process
B	Highwood Hills	<ul style="list-style-type: none">● Meeting with stakeholders: School staff, families, neighbors, partners, businesses, policy makers● Define spatial opportunities / constraints● Define strategic academic opportunities (e.g. early childhood, career readiness, etc.)
C	JA Johnson	
E	LEAP	
F	Jackson	

**Aligning SPPS Achieves, SPPS
Builds and Envision SPPS**

QUESTIONS?

Website: spps.org/envision

Email: envision@spps.org