

Highland Park Senior High

Open House

September 10, 2020



Introductions

Dr. Winston H. Tucker, Principal

**Ms. Vineeta Sawkar Branby, Parent &
PTSA member**



Open House Format

Welcome & Overview

**Visit with licensed staff at any point
(7:00pm-8:30pm)**

Questions & answers after presentation



Open House Agenda

Vision & Mission

Opening Week Expectations

Weekly Schedule

Lesson Design & Student Support

Schoology

Attendance

Material Pick Up

Parent-Teacher- Student-Association (PTSA)

Newsletter

Link Crew

Family Supports

Question & Answer



Saint Paul Public Schools

Mission:

Inspire students to think critically, pursue their dreams and change the world.



VISION:

Highland Park Senior High students graduate as global citizens prepared for college and careers.

MISSION:

- **Delivering excellent instruction based in rigor, international mindedness, and inquiry.**
- **Providing academic supports and interventions.**
- **Creating a safe environment that meets students' needs, supports their interests, and respects their individuality.**
- **Engaging every student, family, and the community, in their educational experience.**

Opening Week Class Topics

Syllabus

Technology Questions

Schoology

Ground students

Build relationships & Community

Class logistics

Course expectations

Meeting teacher and classmates

Attendance taking procedures

Review weekly schedules

Office Hours



Highland Park Senior High Weekly Schedule: Distance Learning 2020/21

	Monday	Tuesday	Wednesday	Thursday	Friday
8:30-9:55 am	Time & Periods 8:30 - 9:00 - 1 9:05 - 9:35 - 2 9:40 - 10:10 - 3 10:15 - 10:45 - 4 10:50 - 11:20 - 5 11:25 - 11:55 - 6 12:00 - 12:30 - 7 (All Classes Meet)	Explore Independently <i>Check Schoology</i>	Explore Independently <i>Check Schoology</i>	Explore Independently <i>Check Schoology</i>	Explore Independently <i>Check Schoology</i>
10:00 -10:55 am <i>For Whole Class same time learning</i>		1	3	5	7
11:00 - 11:55 am <i>For Whole Class same time learning</i>		2	4	6	* <i>HP Staff Meeting</i>
	Lunch	Lunch	Lunch	Lunch	Lunch
12:30 - 3:00 pm	All Classes: Explore independently Check Schoology Explore Together Ask the Teacher	All Classes: Explore independently Check Schoology Explore Together Ask the Teacher	All Classes: Explore independently Check Schoology, Explore Together Ask the Teacher	All Classes: Explore independently Check Schoology Explore Together, Ask the Teacher	All Classes: Explore independently Check Schoology Explore Together Ask the Teacher

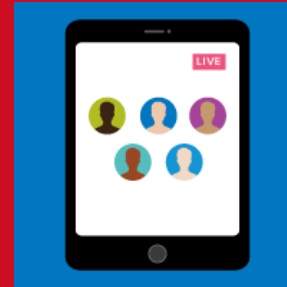
What Lessons Look Like



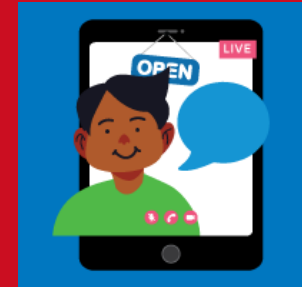
**Full “class”
meeting/ Daily
Meeting→
SAME TIME**



**Independent work
time→ ANYTIME**



**Small groups/
Tutoring/Check-
In→ SAME TIME**
set times to work on
specific
assignments/
discussions/
projects/etc.

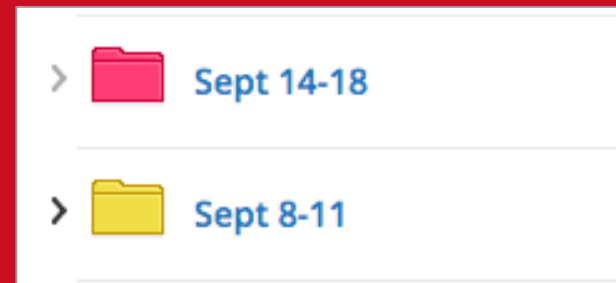


Office Hours→ set
times each week
when teachers are
available to answer
questions/work with
students in specific
classes.

Lessons and Assignments: Schoology

Grades **6-12 teachers** will use Schoology to deliver daily lessons and track daily grades.

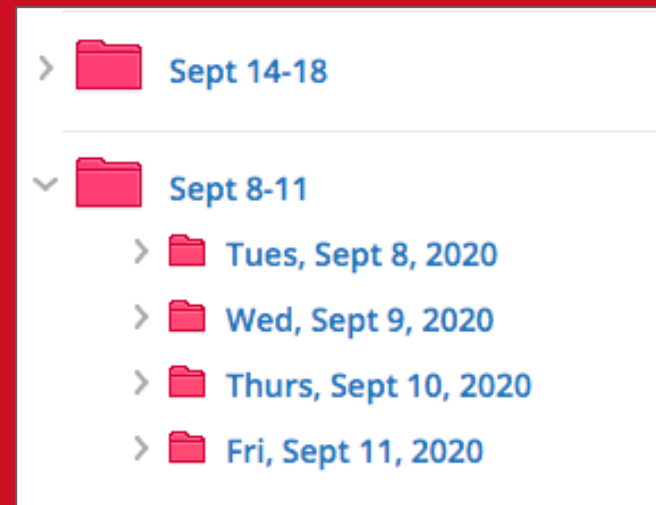
- Teachers organize lessons in **folders**.
 - Main folder for each week with dates
 - Teachers may determine the best organization inside the weekly folder.
 - Most **CURRENT** week is at the top



Lessons and Assignments: Schoology

Grades **6-12 teachers** use Schoology to deliver daily lessons and track daily grades.

- Teachers organize lessons in **folders**.
 - **Main folder** for each week with dates
 - **Daily folder** with date and day of the week
 - Repeat for each week
 - Most **CURRENT** week is at the top



Office Hours

1. Minimum 3 hours per week not conflicting with class periods
2. Purpose: Extra support, tutoring, clarification, small group meetings, one on one assistance, Special Education supports, more.



Attendance Taking

1. **Students mark themselves present every school day when engaged in learning**
2. **Counts for all classes even if not meeting**
3. **District website: video instructions**



Material Pick Up

September 15: 8:30am-12:00pm

September 17: 12:00p-3:00pm

Highland Parking Lot

Mask Required



Parent Teacher Student Association (PTSA)

Ms. Vineeta Sawkar Branby

First Meeting: September 16, 6:30pm



Weekly Newsletter

Emailed on Fridays

Please review carefully



Link Crew Event Freshman

Friday, September 11
11am-12:30pm



District Support

- Attendance procedure: <https://www.spps.org/Page/40384>
- Schoology Support: <https://www.spps.org/Page/30107>
- iPad Help: <https://www.spps.org/Page/38790>
- Distance Learning Family Support: <https://www.spps.org/Page/38794>
- Additional Information about Distance Learning: <https://www.spps.org/Page/39071>



Supports for Families

- Districtwide Parent Help Line 651-767-8347 or email family.engagement@spps.org.
- Technology Help Desk 651-603-4348, email familysupport@spps.org
- Technology tutorials, other online support spps.org/distancelearning available to all, any time, with workshops provided for families
- Child Care Resources
 - Child Care Aware referral line at 1.888.291.9811
 - Children's Defense Fund [Minnesota's Bridge to Benefits screening tool](#)
 - MN Dept of Human Services [Child Care Assistance](#)

**Thank you for your
support !**

Scots Rock !



Questions?

