



**GROVELAND PARK  
ELEMENTARY SCHOOL**

# Ms. Felber's Counseling Corner



## Contact Me

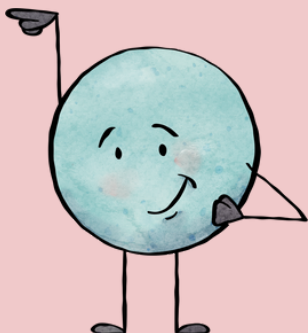
Please contact me with any questions or concerns, or if you feel your student could use additional support in any of these areas.

Email:  
[elina.felber@spps.org](mailto:elina.felber@spps.org)

Phone: 651-744-5311

## Resources

[Groveland Virtual  
Calming Room](#)



## HELLO!

**My name is Ms. Felber and I am the school counselor.**

My name is Ellie Felber and I have been the school counselor at Groveland Park Elementary since 2020. I love being part of this wonderful community of students, teachers, and families!

My primary focus is to provide the support students need to be successful in school and in life. I support students in academic, social/emotional, and postsecondary areas through individual meetings, small groups and classroom lessons. I use guidelines and frameworks developed by the American School Counselor Association (ASCA) to inform the work that I do at Groveland Park. I collaborate with teachers and the other support staff to make sure that all students are receiving the support that they need to be successful.

I love being a school counselor and feel honored to work with so many wonderful students and families every day! My hope for all of our students is that they would feel valued and supported in their journey as learners.