



Highland Park Elementary  
Playground Design

1700W Saunders Ave,  
St Paul, MN 55116

Scale:



Highland Park Elementary  
 Playground Design

1700 W Saunders Ave,  
 St Paul, MN 55116



IT IS THE MANUFACTURERS OPINION AND INTENT THAT THE USE AND LAYOUT OF THESE COMPONENTS CONFORM WITH THE AMERICAN SOCIETY FOR TESTING AND MATERIALS (ASTM) STANDARD ASTM F1487

THIS PLAY AREA & PLAY EQUIPMENT IS DESIGNED FOR AGES 2-12 YEARS UNLESS OTHERWISE NOTED ON PLAN.

IT IS THE MANUFACTURERS OPINION THAT THIS PLAY AREA DOES CONFORM TO THE A.D.A. ACCESSIBILITY STANDARDS, ASSUMING AN ACCESSIBLE PROTECTIVE SURFACING IS PROVIDED, AS INDICATED, OR WITHIN THE ENTIRE USE ZONE.

THIS CONCEPTUAL PLAN WAS BASED ON INFORMATION AVAILABLE TO US. PRIOR TO CONSTRUCTION, DETAILED SITE INFORMATION INCLUDING SITE DIMENSIONS, TOPOGRAPHY, EXISTING UTILITIES, SOIL CONDITIONS, AND DRAINAGE SOLUTIONS SHOULD BE OBTAINED, EVALUATED, & UTILIZED IN THE FINAL DESIGN. PLEASE VERIFY ALL DIMENSIONS OF PLAY AREA, SIZE, ORIENTATION, AND LOCATION OF ALL EXISTING UTILITIES, EQUIPMENT, AND SITE FURNISHINGS PRIOR TO ORDERING. SLIDES SHOULD NOT FACE THE HOT AFTERNOON SUN.

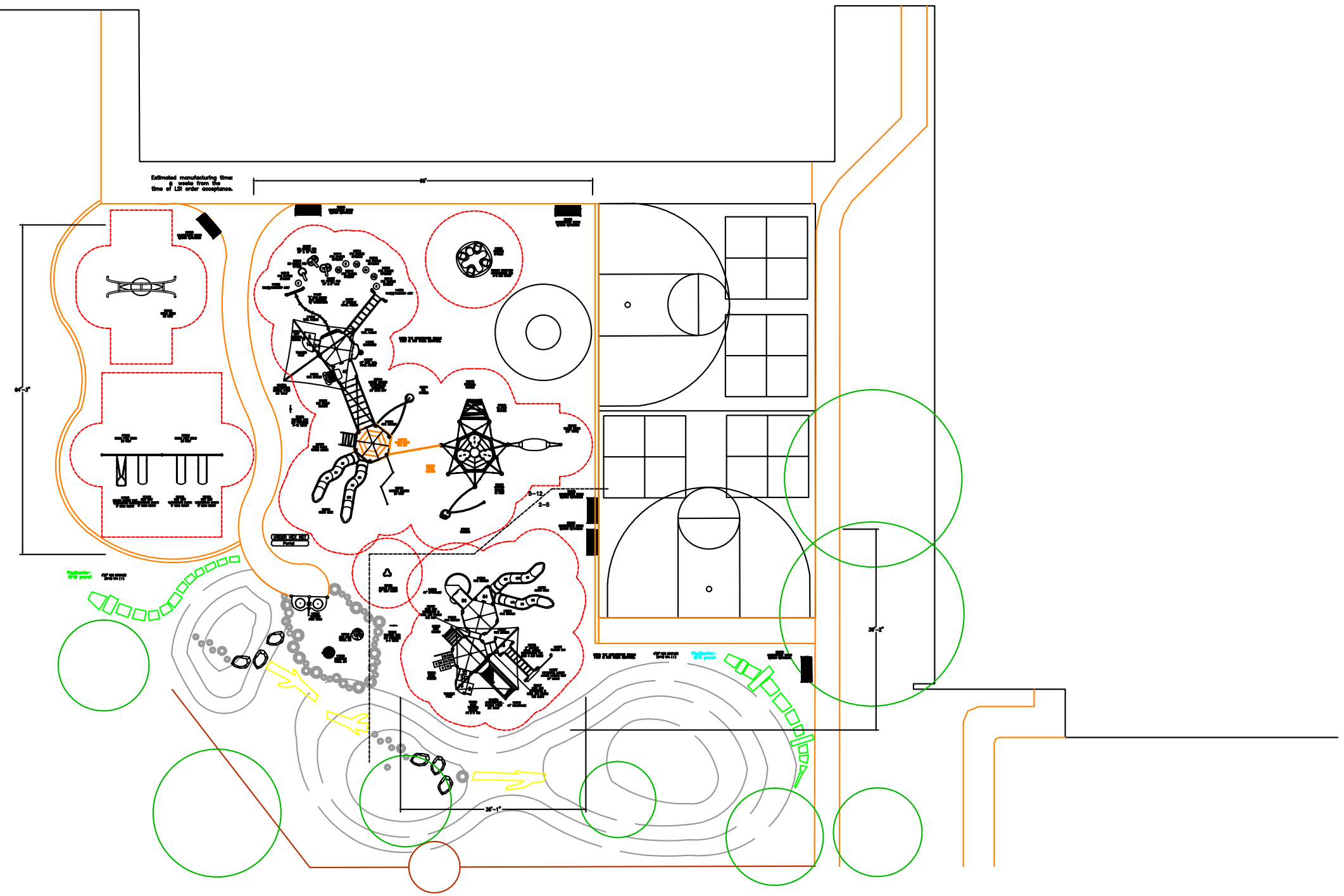
CHOOSE A PROTECTIVE SURFACING MATERIAL THAT HAS A CRITICAL HEIGHT VALUE TO MEET THE MAXIMUM FALL HEIGHT FOR THE EQUIPMENT (REF. ASTM F1487 STANDARD CONSUMER SAFETY PERFORMANCE SPECIFICATION FOR PLAYGROUND EQUIPMENT FOR PUBLIC USE, SECTION 8 CURRENT REVISION). THE SUBSURFACE MUST BE WELL DRAINED. IF THE SOIL DOES NOT DRAIN NATURALLY IT MUST BE TILED OR SLOPED 1/8" TO 1/4" PER FOOT TO A STORM SEWER OR A "FRENCH DRAIN".

ACCESSIBLE/PROTECTIVE  
LOOSE FILL MATERIAL  
(ENGINEERED WOOD FIBER SUGGESTED)

DESIGNED BY:  
SS

COPYRIGHT: 6/15/16  
LANDSCAPE STRUCTURES, INC.  
801 7th STREET SOUTH - P.O. BOX 198  
DELANO, MINNESOTA 55328  
PH: 1-800-328-0035 FAX: 1-763-972-6091

5/17/16	94007-1-1	SS
Date	Previous Drawing #	Initials

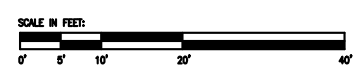


5-12

TOTAL ELEVATED PLAY COMPONENTS	10		
TOTAL ELEVATED COMPONENTS ACCESSIBLE BY RAMP	0	REQUIRED	0
TOTAL ELEVATED COMPONENTS ACCESSIBLE BY TRANSFER	5	REQUIRED	5
TOTAL ACCESSIBLE GROUND LEVEL COMPONENTS SHOWN	23	REQUIRED	3
TOTAL DIFFERENT TYPES OF GROUND LEVEL COMPONENTS	11	REQUIRED	11

2-5

TOTAL ELEVATED PLAY COMPONENTS	6		
TOTAL ELEVATED COMPONENTS ACCESSIBLE BY RAMP	0	REQUIRED	0
TOTAL ELEVATED COMPONENTS ACCESSIBLE BY TRANSFER	6	REQUIRED	3
TOTAL ACCESSIBLE GROUND LEVEL COMPONENTS SHOWN	2	REQUIRED	2
TOTAL DIFFERENT TYPES OF GROUND LEVEL COMPONENTS	2	REQUIRED	2

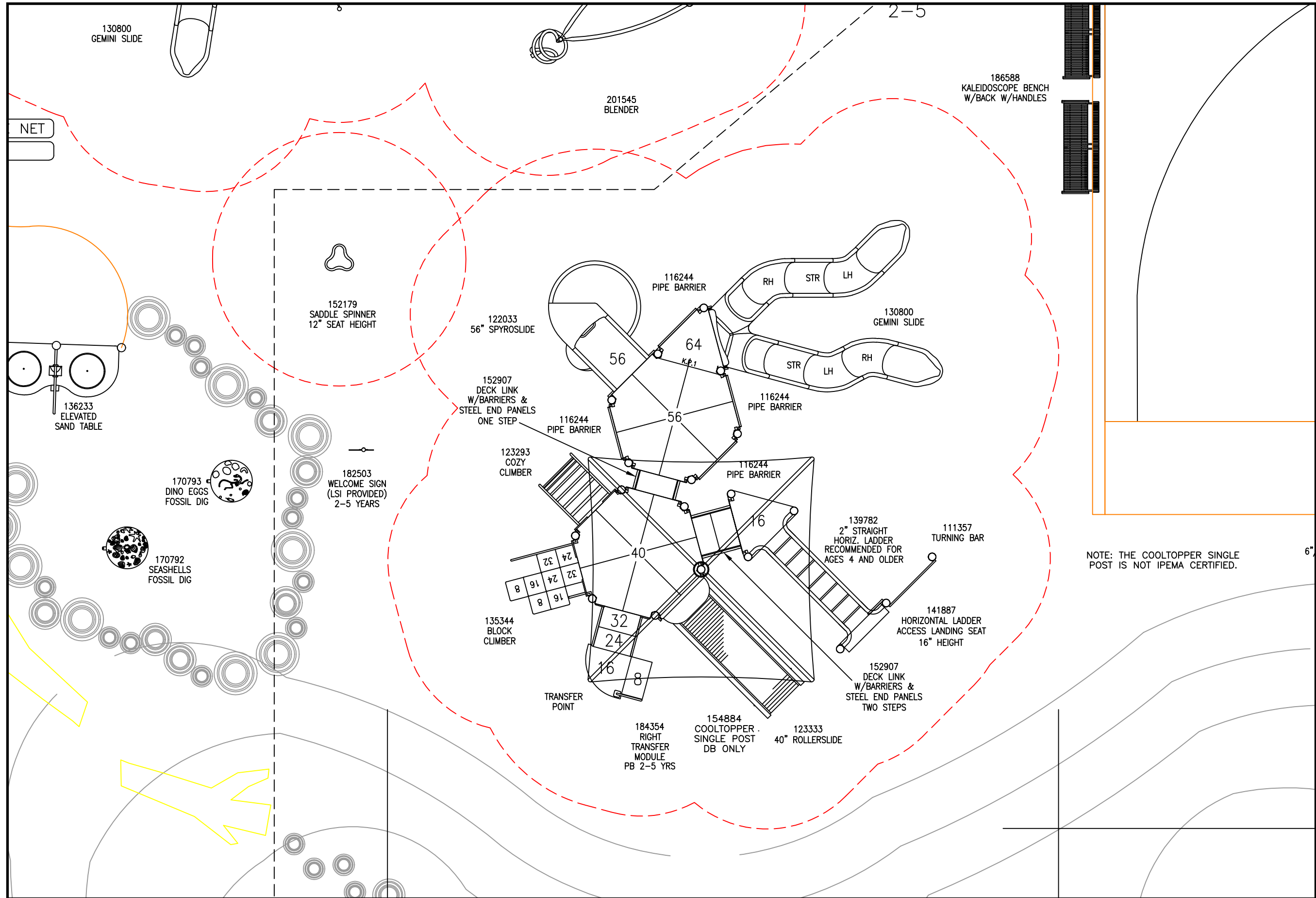


Highland Park Elementary  
Saint Paul, MN

Flagship  
Recreation  
Charlie Colvin

SYSTEM TYPE:  
PlayBooster  
  
DRAWING #:  
94007-1-2





130800  
GEMINI SLIDE

201545  
BLENDER

186588  
KALEIDOSCOPE BENCH  
W/BACK W/HANDLES

NET

152179  
SADDLE SPINNER  
12" SEAT HEIGHT

122033  
56" SPYROSLIDE

130800  
GEMINI SLIDE

136233  
ELEVATED  
SAND TABLE

152907  
DECK LINK  
W/BARRIERS &  
STEEL END PANELS  
ONE STEP

56

116244  
PIPE BARRIER

64

56

116244  
PIPE BARRIER

170793  
DINO EGGS  
FOSSIL DIG

182503  
WELCOME SIGN  
(LSI PROVIDED)  
2-5 YEARS

123293  
COZY  
CLIMBER

116244  
PIPE BARRIER

116244  
PIPE BARRIER

170792  
SEASHELLS  
FOSSIL DIG

135344  
BLOCK  
CLIMBER

TRANSFER  
POINT

184354  
RIGHT  
TRANSFER  
MODULE  
PB 2-5 YRS

154884  
COOLTOPPER  
SINGLE POST  
DB ONLY

123333  
40" ROLLERSLIDE

139782  
2" STRAIGHT  
HORIZ. LADDER  
RECOMMENDED FOR  
AGES 4 AND OLDER

111357  
TURNING BAR

141887  
HORIZONTAL LADDER  
ACCESS LANDING SEAT  
16" HEIGHT

152907  
DECK LINK  
W/BARRIERS &  
STEEL END PANELS  
TWO STEPS

NOTE: THE COOLTOPPER SINGLE  
POST IS NOT IPEMA CERTIFIED.

6"