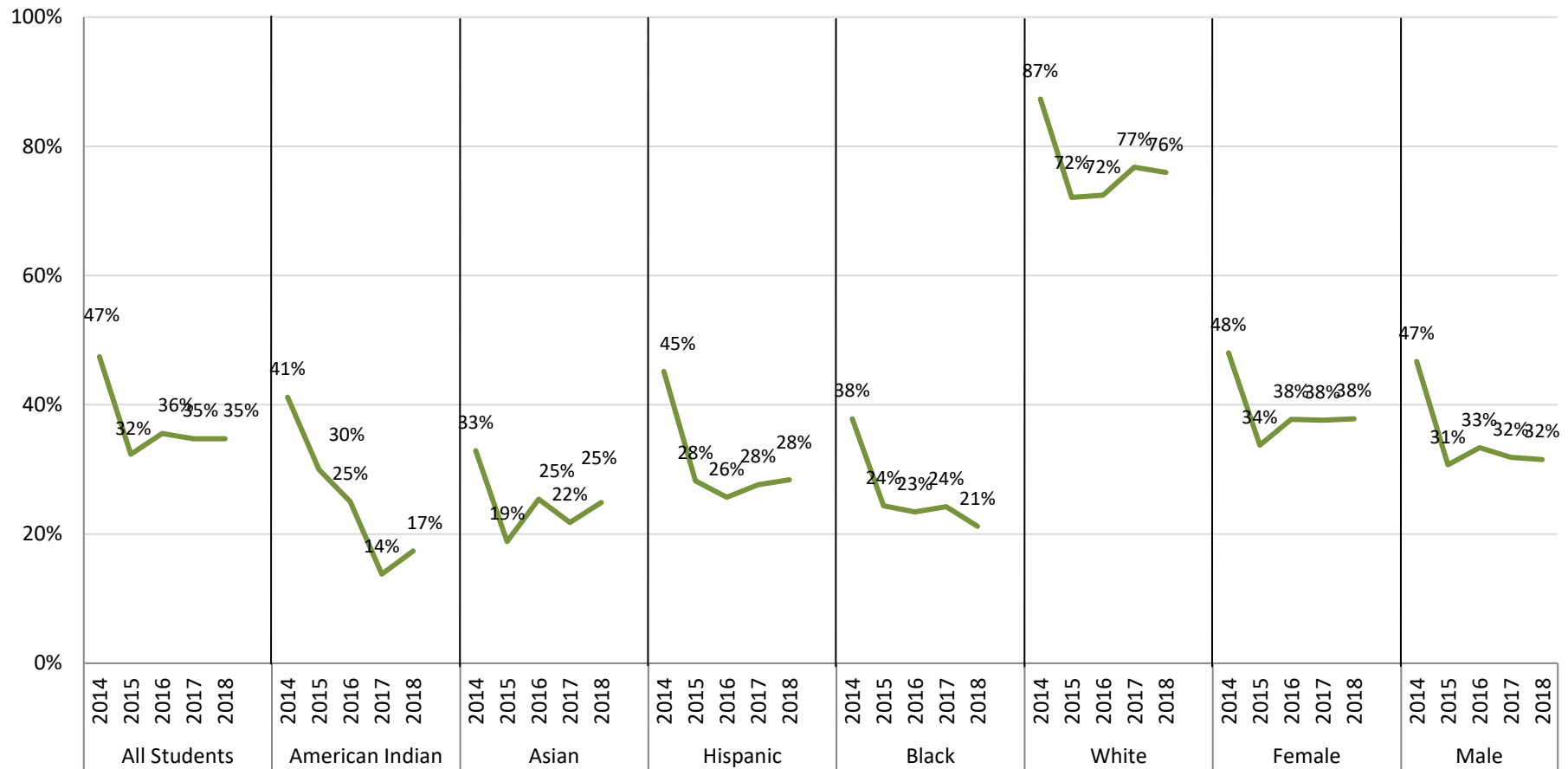


Saint Paul Public Schools ACT Performance in English by Student Group

Percent of Students Meeting College Readiness Benchmark

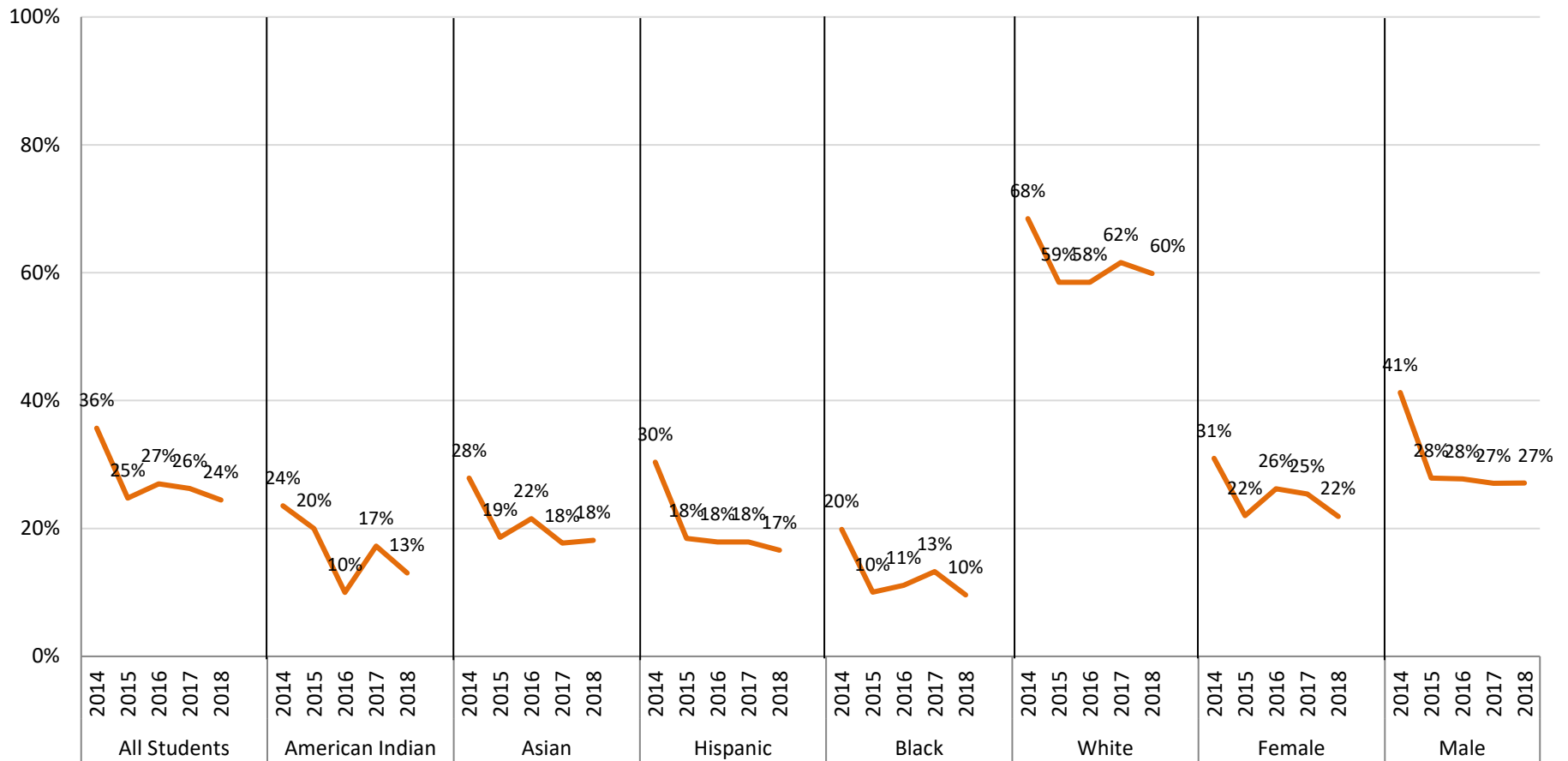


Note: ACT College Readiness Benchmarks are the minimum ACT test scores required for students to have a high probability of success in credit-bearing college courses. The College Readiness Benchmark score for English is 18.

*Beginning in Spring 2014, SPPS provides an ACT test administration day to students district-wide in their enrolled school.

Saint Paul Public Schools ACT Performance in Math by Student Group

Percent of Students Meeting College Readiness Benchmark



Note: ACT College Readiness Benchmarks are the minimum ACT test scores required for students to have a high probability of success in credit-bearing college courses. The College Readiness Benchmark score for Math is 22.

*Beginning in Spring 2014, SPPS provides an ACT test administration day to students district-wide in their enrolled school.



Saint Paul Public Schools

ACT Performance in Reading by Student Group

Percent of Students Meeting College Readiness Benchmark



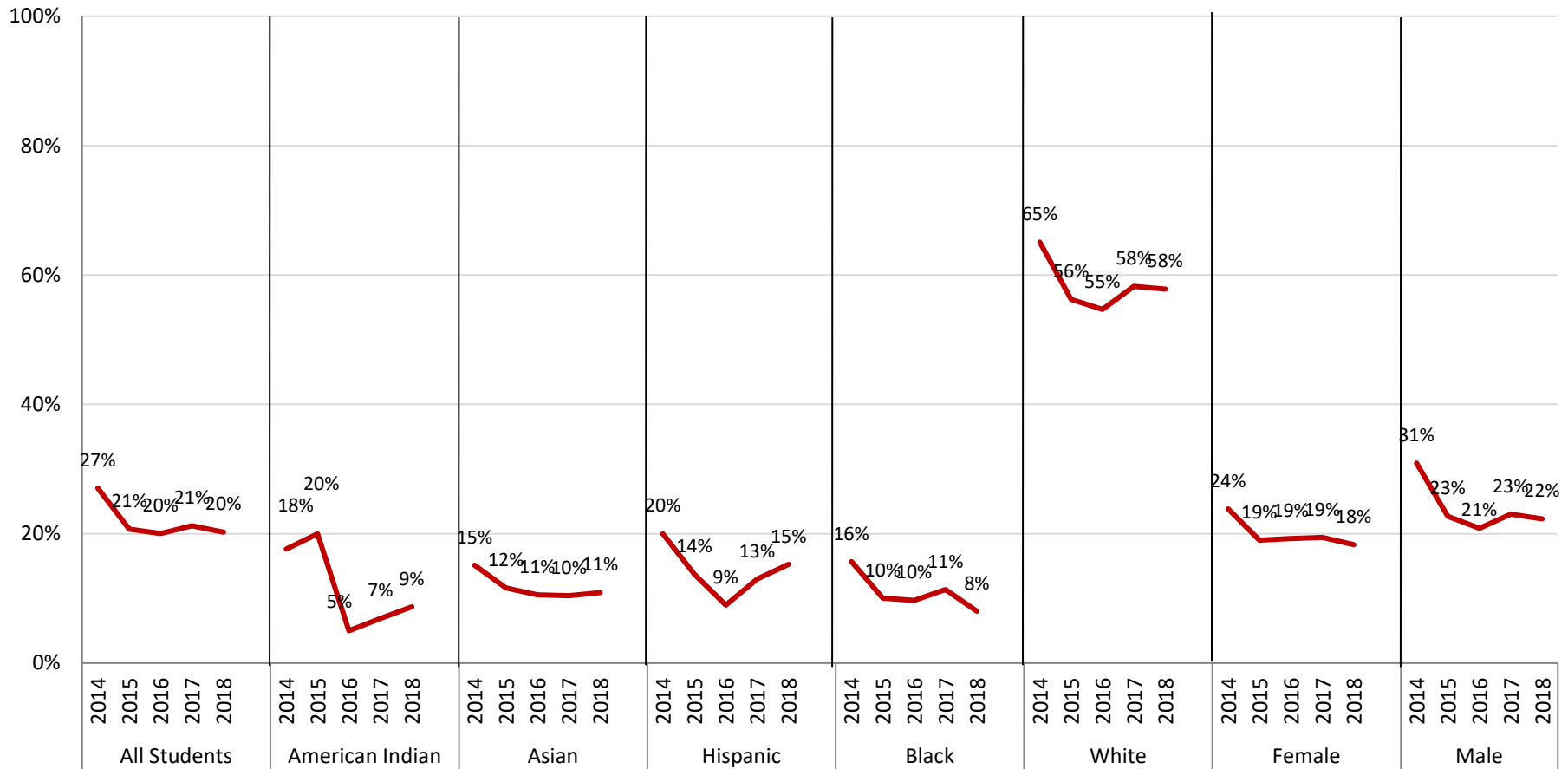
Note: ACT College Readiness Benchmarks are the minimum ACT test scores required for students to have a high probability of success in credit-bearing college courses. The College Readiness Benchmark score for Reading is 22.

*Beginning in Spring 2014, SPPS provides an ACT test administration day to students district-wide in their enrolled school.



Saint Paul Public Schools ACT Performance in Science by Student Group

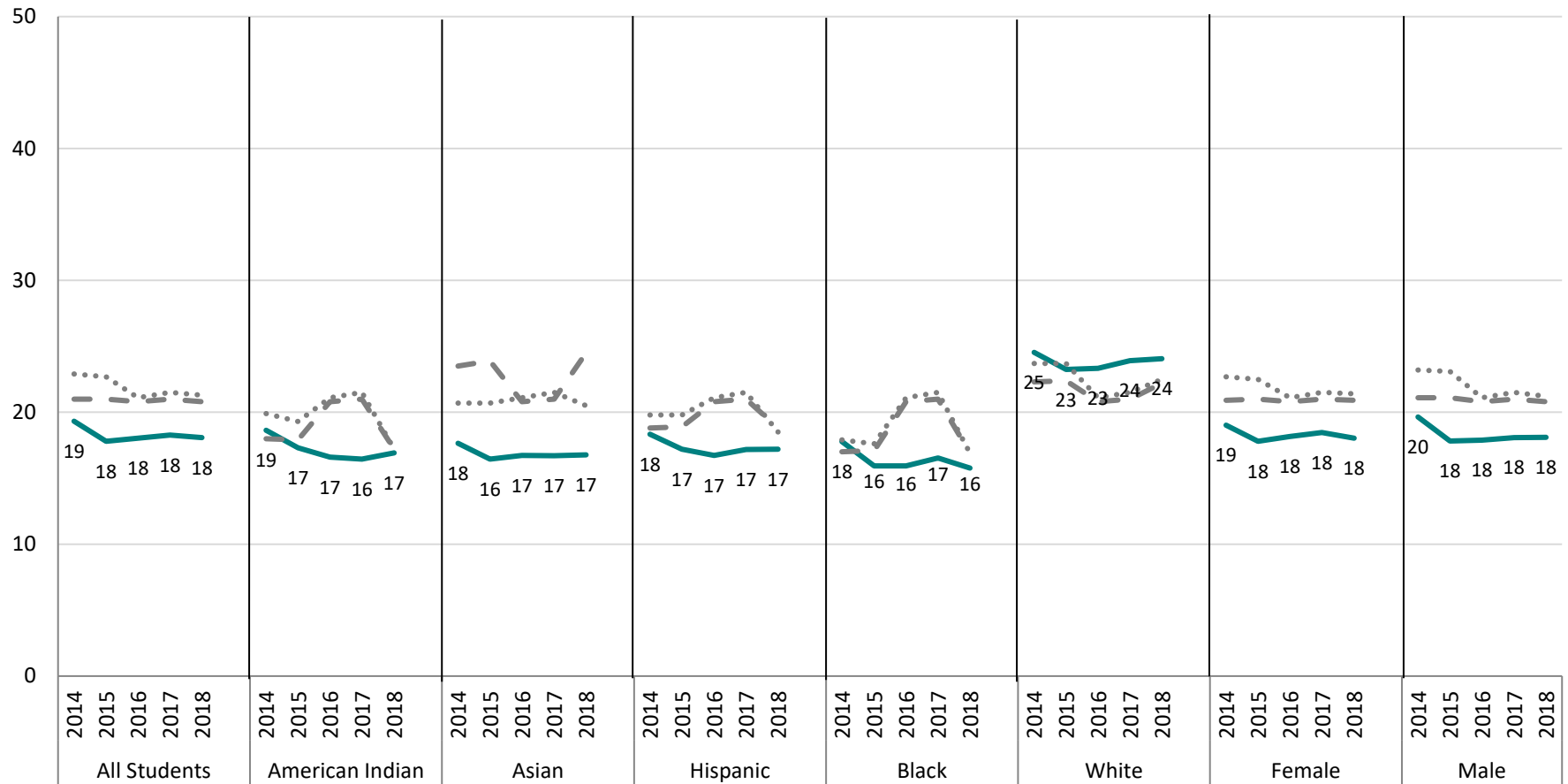
Percent of Students Meeting College Readiness Benchmark



Note: ACT College Readiness Benchmarks are the minimum ACT test scores required for students to have a high probability of success in credit-bearing college courses. The College Readiness Benchmark score for Science is 23.

*Beginning in Spring 2014, SPPS provides an ACT test administration day to students district-wide in their enrolled school.

Saint Paul Public Schools ACT Average Composite Score by Student Group



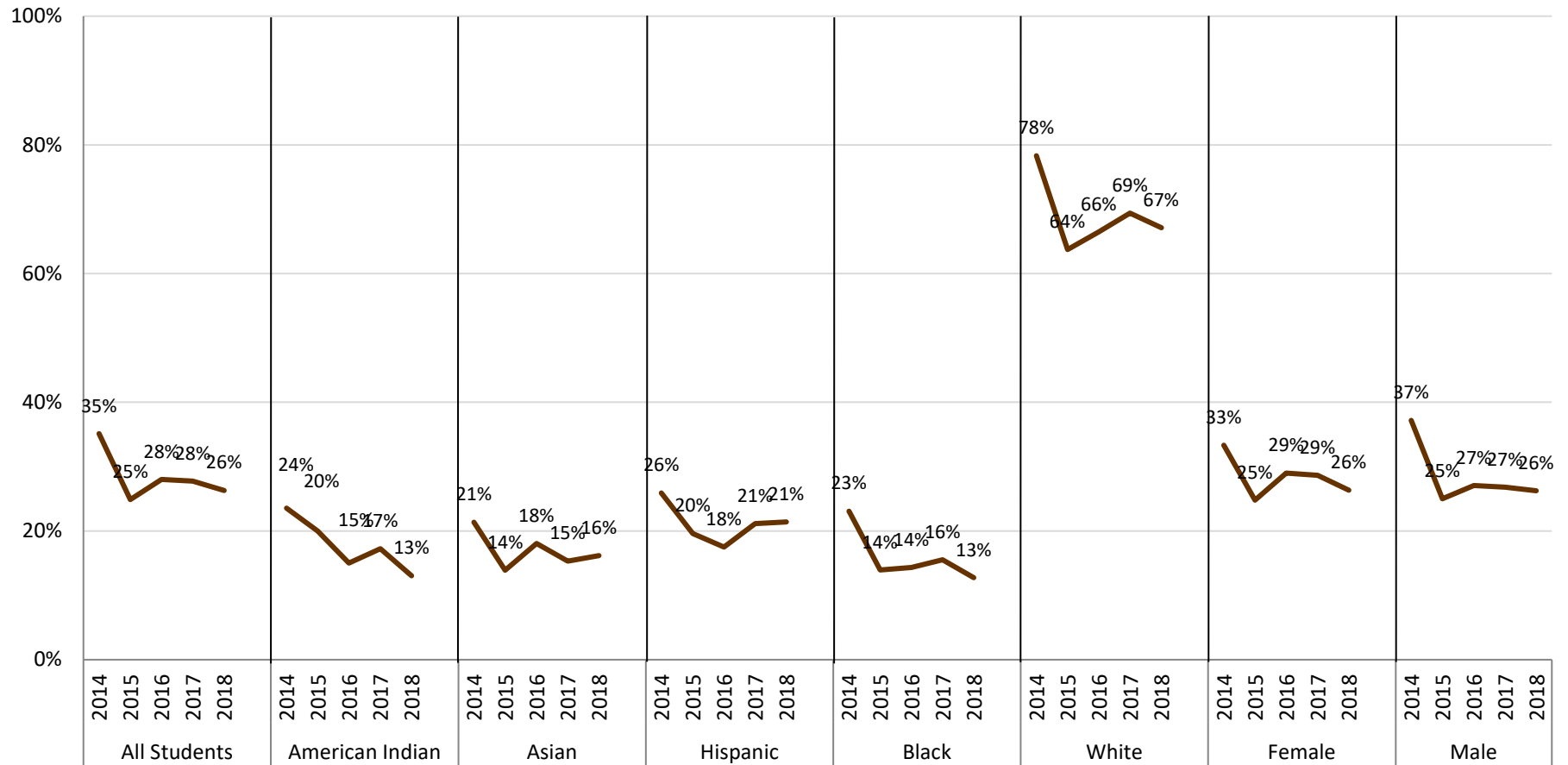
Note: Dashed line represents the state of Minnesota average ACT composite score.
 Dotted line represents the national average ACT composite score.
 The highest possible score for the ACT is 36.

*Beginning in Spring 2014, SPPS provides an ACT test administration day to students district-wide in their enrolled school.



Saint Paul Public Schools ACT Performance by Student Group

Percent of Students Scoring 21 or Greater



*Beginning in Spring 2014, SPPS provides an ACT test administration day to students district-wide in their enrolled school.



Saint Paul Public Schools ACT Percent Passing All Four Benchmarks

Comparison to State and National Performance

